

Sheep

What do you call it?

- Ovine – the scientific name for sheep
- Ewe – a female sheep
- Dam- a female sheep that has given birth
- Lamb – a sheep less than one year in age
- Ram – a male sheep
- Wether – a castrated male sheep
- Wool- fibers that make up the coat of the sheep
- Flock or Herd- group of sheep

Facts about :

- Lifespan of 10-12 years
- Weight of 99-300 lbs
- Rectangular pupils allow for a wide field of vision, around 270 to 320 degrees
- The vocals are called bleats and Dams can recognize their lambs by these sounds
- There are over 1,000 breeds of sheep
- They do not have top front teeth
- 4 main classifications for show lambs- Fine Wool, Medium Wool, Fine Wool Cross, and Southdown



Fine Wool



Fine Wool Cross (with Medium Wool)



Medium Wool



Southdown

Nigerian Dwarf Goats

What do you call it?

- Caprine – refers to animals in the goat family
- Kid – a young goat
- Wether – a castrated male goat
- Doe – (aka. nanny) a female goat
- Buck – (aka. billy) a sexually mature male goat
- Herd- group of a single species of animal



Florence:

- Florence was named after the founder of H-E-B Florence Butt
- Born April 2023

Facts about goats:

- Average lifespan of 15 years
- Weight ranges from 50-80 lbs.
- Range between 20-26 inches in height
- Gestation period is 145-154 days
- Milking breed of goat
 - higher butterfat and protein content compared to other goat milk
 - 1/2 gallon of milk produced daily
 - people can drink this milk even if they are intolerant to cow's milk



Capri:

- Capri is short for Caprine
- Born June 2023

H·E·B

Helping Here

Purchased through H-E-B – San Antonio Foundation for Educational Excellence, Inc.

Cinnamon

NSR: FFAB9 TR SUE SI 2-8

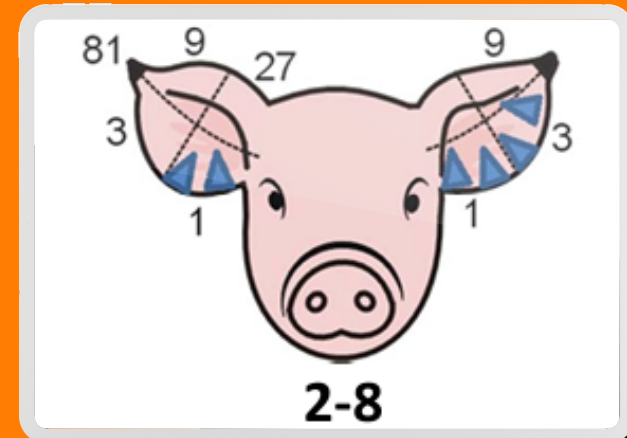
Duroc Sow

DOB:8/5/2019

Weight: 545 Lbs.

Facts about Duroc Swine:

- Known for their red color and droopy ears
- Can have an average of 15 piglets per litter
- The second most recorded breed in the United States
- Duroc have a medium body length
- Face has a slight dish of the face
- Weight ranges up to 800 lbs.
- One of the most docile breeds
- Excellent mothering ability
- Typical litter 8-10 piglets (2023 litter had 6 piglets)
- Resistant to diseases and hot climates
- Pork cuts from Duroc pigs are deep red and richly marbled.
- Registered with National Swine Registry #410854008

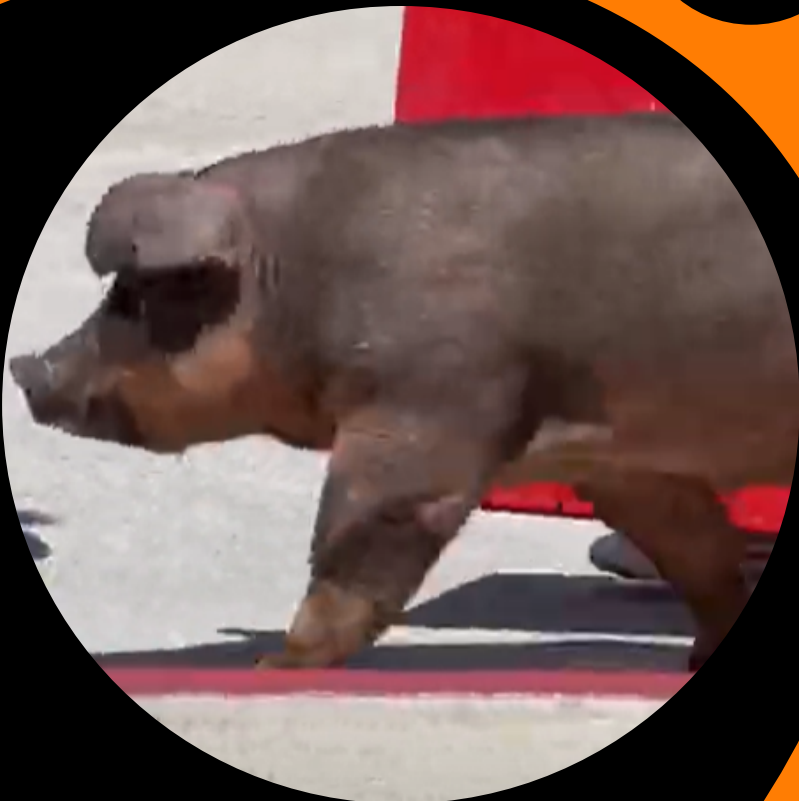


Kim

Duroc Sow

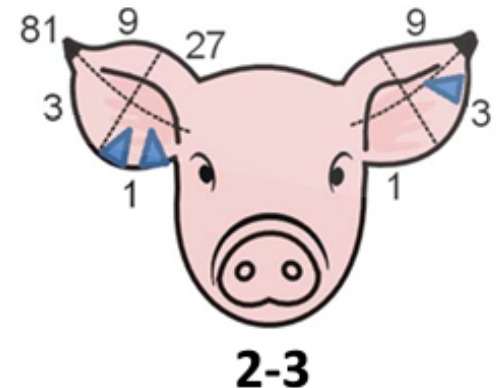
DOB: 2022

Weight: 417 Lbs.



Facts about Duroc Swine:

- Known for their red color and droopy ears
- Can have an average of 15 piglets per litter
- The second most recorded breed in the United States
- Duroc have a medium body length
- Face has a slight dish of the face
- Weight ranges up to 800 lbs.
- One of the most docile breeds
- Excellent mothering ability
- Typical litter 8-10 piglets
- Resistant to diseases and hot climates
- Pork cuts from Duroc pigs are deep red and richly marbled.
- Mother was Cinnamon (Burbank Sow)



Spot

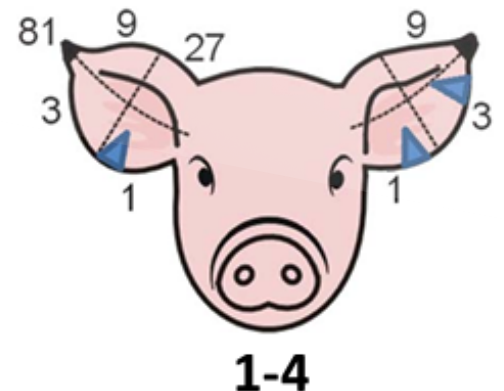
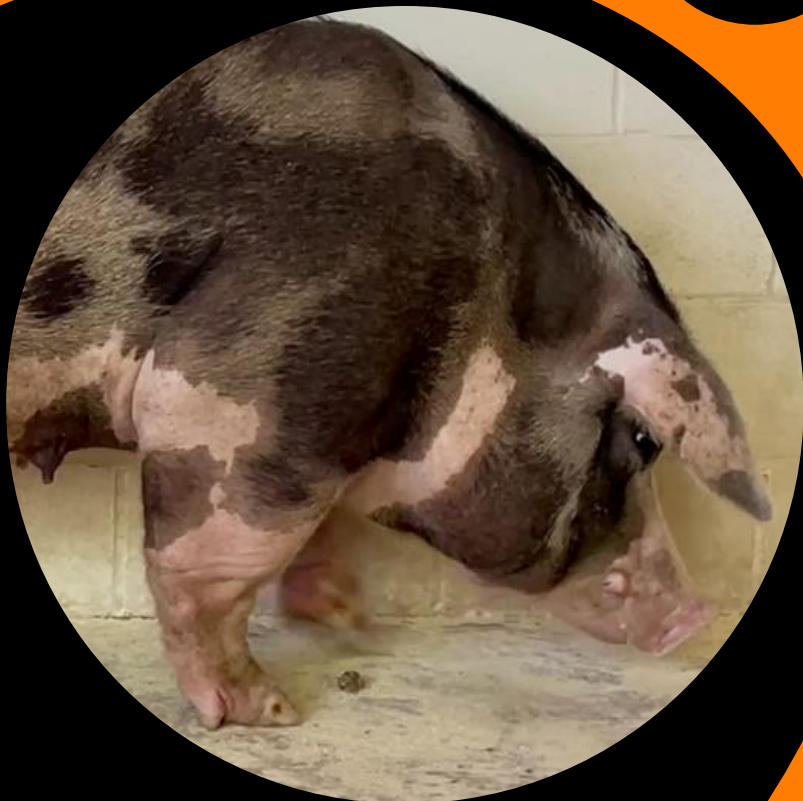
Spot Sow

DOB: 2021

Weight: 545 Lbs.

Facts about Spot Swine:

- Known for their black and white spot color and droopy ears
- Ancestor of the Poland China and Gloucester Old Spot breeds
- High rate of gain with weights of sows around 500 lbs.
- Typical litter 7-14 piglets
- Known for their foraging abilities
- Can withstand cold and heat weather extremes
- Known for their feed efficiency, rate of gain and carcass quality



Roseta

Crossbreed Sow

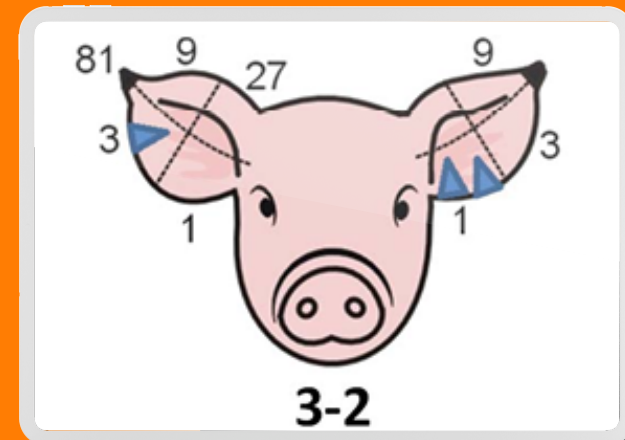
DOB: 2022

Weight: 450 Lbs.



Facts about Crossbreed Swine:

- Crossbreed animals is a combination of two breeds to create a variety of combinations of offspring
- Can be of any color combination and ear type
- Crossbreeding tries to combine the best qualities from each breed into one animal
- Typically, higher weight at weaning can be expected
- Females with Landrace, Yorkshire and Chester White breeding were superior in mothering ability to those with predominantly Duroc, Hampshire, and Spot breeding
- Duroc sired pigs had an advantage for growth rate and Hampshire sired pigs were found to be superior for carcass merit
- Mother was Tutu (Burbank Sow)



Peanut Brittle

Crossbreed Sow

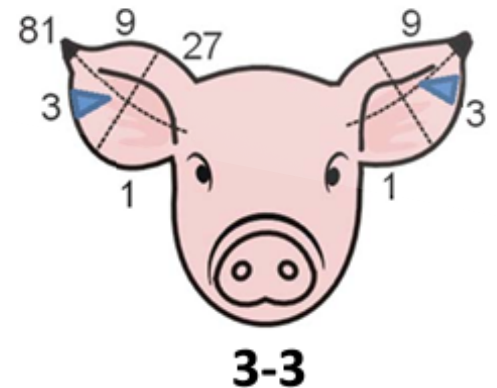
DOB: 2021

Weight: 520 Lbs.



Facts about Crossbreed Swine:

- Facts about Crossbreed Swine:
- Crossbreed animals is a combination of two breeds to create a variety of combinations of offspring
- Can be of any color combination and ear type
- Crossbreeding tries to combine the best qualities from each breed into one animal
- Typically, higher weight at weaning can be expected
- Females with Landrace, Yorkshire and Chester White breeding were superior in mothering ability to those with predominantly Duroc, Hampshire, and Spot breeding
- Duroc sired pigs had an advantage for growth rate and Hampshire sired pigs were found to be superior for carcass merit
- Typical litter 8-12 piglets (2023 litter had 11 piglets)



Olivia

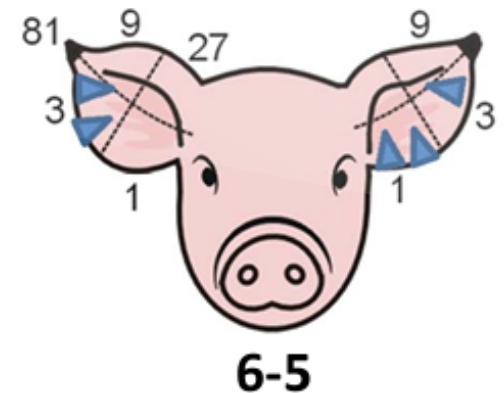
Chester Sow

DOB: 2021

Weight: 460 Lbs.

Facts about Chester Swine:

- Known for their white color and droopy ears
- Developed around 1815
- Chester Whites originated in Chester County, Pa
- Most durable of the white breeds
- Can gain as much as 1lb for every 3 lbs of feed it eats
- Prone to sunburn
- Lifespan of 6-10 years
- Prone to Vitamin C deficiency
- Excellent mothering ability
- Typical litter 8-10 piglets (2023 litter had 15 piglets)
- Large fatty pig
- Pork cuts are known for high fat content and savory taste



Johnny

Hampshire Boar

DOB: 2019

Weight: 580 Lbs.

Facts about Hampshire Swine:

- Known for their Black and White belt with erect ears
- Hampshire county in England that importations were thought to be made to American between 1825 and 1835
- Fourth-most recorded breed in the United States
- Known for their extreme intelligence, docile nature, and good temperament (Friendly and non-aggressive)
- With their bad eyesight, these pigs are extremely sensitive to smell
- Males can reach a weight of up to 660 pounds while females can reach up to 550 pounds
- Lifespan of a Hampshire can be up to 12 years
- Prefer a clean living environment.
- Excellent mothering ability
- Typical litter 7-15 piglets
- Pork cuts are lean muscle, high carcass quality, minimal backfat and large loin eye



Oreo

Hampshire Sow

DOB: 2021

Weight: 515 Lbs.



Facts about Hampshire Swine:

- Known for their Black and White belt with erect ears
- Hampshire county in England that importations were thought to be made to American between 1825 and 1835
- Fourth-most recorded breed in the United States
- Known for their extreme intelligence, docile nature, and good temperament (Friendly and non-aggressive)
- With their bad eyesight, these pigs are extremely sensitive to smell
- Females can reach up to 550 pounds
- Lifespan of a Hampshire can be up to 12 years
- Prefer a clean living environment.
- Excellent mothering ability
- Typical litter 7-15 piglets
- Pork cuts are lean muscle, high carcass quality, minimal backfat and large loin eye

