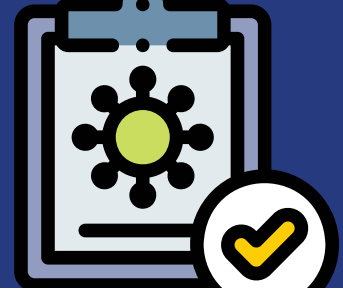




2021-2022 Safety Guidelines

Planning for a Safe School Start



Learning & Dress Code



Learning Options

Students are expected to return to in-person classes. Students who have a medically documented illness that prevents them from attending school in person may be eligible for [in-home learning services](#).

To request an evaluation of in-home learning services, please complete [this form](#). Families with special circumstances who have concerns with returning their students to in-person instruction should ensure their student is enrolled for the 2021-2022 school year and contact their school to review options available.



Retaining Students

Parents with concerns about their child's progress and with questions about repeating a grade may contact their school counselor.

For additional information, visit www.tea.texas.gov/repeatgrade and www.tea.texas.gov/restartkinder. Requests for retention should be submitted in writing using [this form](#).



Uniforms

All students must adhere to the District's dress code which has been updated for the 2021-2022 school year.

The new policy expands clothing options for our students in middle and high school grades, and gives lower grade levels the option of wearing jeans. The new guidelines also allow students to wear their natural hairstyles and religious head coverings. Please use these links to view the [Updated SAISD Dress Code Policy](#) and [Dress Code By Campus](#).

Safety Protocols



Wearing Masks

Mask wearing is strongly encouraged when indoors for all individuals. Individuals who are outdoors should wear masks if they are in congregate settings and unable to socially distance.

If you do not want your child to wear a mask, please use this [link to opt your child out of wearing a mask while at school](#).



Hand Washing

Students will continue to be instructed on [proper handwashing](#) and will be provided time within the school day to wash their hands.



Sanitizing & PPE

Alcohol-based hand sanitizer dispensers are located in each classroom, as well as throughout common areas on each campus. Staff and students will be provided with disposable face masks as needed.



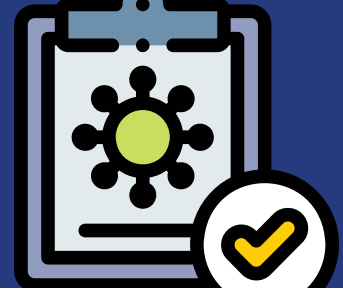
Cleaning & Disinfecting

Learning areas will be cleaned daily using an Environmental Protective Agency (EPA) approved cleaning and disinfecting solution, followed by weekly surface treatment using an electrostatic applicator. High-touch surfaces in common areas will be cleaned and disinfected daily. All spaces occupied by a person who tests positive for COVID-19 will be thoroughly cleaned and disinfected within 24 hours.



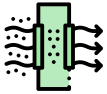
2021-2022 Safety Guidelines

Planning for a Safe School Start



Water Systems

All water fountains will be converted to water bottle filling stations. Students and staff will be asked to bring water bottles daily.



Air Filtration

We will continue to implement an aggressive preventive maintenance program of the HVAC systems to ensure systems are functioning as intended.



Plexiglass Barriers & Partitions

Plexiglass barriers have been provided to schools to use in public areas where social distancing might be a challenge (e.g., reception desks, cafeterias).



School Buses

Social distancing will be implemented on buses to the maximum extent possible. Students will be seated two to a seat, every other window, hand sanitizer stations will be available, and roof hatches will be open (weather permitting).



Testing

Weekly COVID-19 testing will be offered.



Vaccinations

We will continue to provide opportunities for all eligible students (ages 12 and older), families, and staff to get vaccinated. We will also continue to monitor the timeline for students who are 5-11 years of age to receive the vaccine.

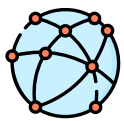
Communication and General Quarantine Criteria

We will provide families with the most up to date information as it pertains to COVID-19 in their child's classroom or school. Additionally, we will continue to communicate information on infections and other COVID-19 updates as it becomes available.



Letters to Families

Any time a student or staff member on your child's campus is identified as a lab-confirmed COVID-19 positive case, the principal will email a letter to the parents of all students.



School Safety Hub and Web Updates

The [School Safety Hub](#) will serve as a one-stop source to house communication updates to stakeholders. Major updates will also be highlighted on the [District home page](#) and the [Parents & Students page](#).



COVID-19 Dashboard

San Antonio ISD will continue to publish a [weekly public report](#) with the number of lab-confirmed student and staff COVID-19 cases on each campus.



Family FAQ

A Frequently Asked Questions (FAQ) repository will be maintained on the [School Safety Hub](#) for families.



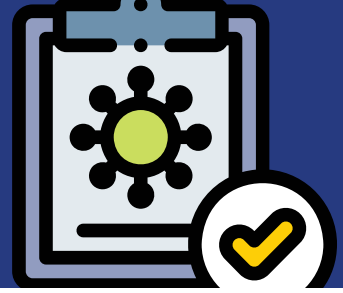
Forums

San Antonio ISD will hold virtual and/or in-person forums including town halls and virtual Q&As to engage families and community members.



2021-2022 Safety Guidelines

Planning for a Safe School Start



General Criteria for Quarantine

San Antonio ISD will align with CDC and Metro Health guidelines to determine when individuals are identified as close contacts and are required to quarantine:

- 1) Students and staff should remain home when sick.
- 2) Individuals who are **fully vaccinated** will not have to quarantine if exposed to a lab-confirmed case as long as they are asymptomatic.
- 3) Individuals who are correctly and consistently masked, using well-fitting masks, will generally not have to quarantine if exposed to a lab-confirmed case.
- 4) Staff and students who are designated a “close contact” may be quarantined up to 10 calendar days.

Visitors and Volunteers



Volunteers

Due to the high COVID-19 transmission rate in our community, and to reduce risk to students and staff, volunteers and activities involving external groups or organizations will not be allowed in any school or building, during and out of instructional hours, until further notice. This includes parent and community volunteers, classroom helpers, classroom speakers, mentors, tutors, guest speakers, etc. Community use of school or building facilities will not be allowed.



Visitors

Visitors are restricted to essential school operations for parents. Parents will be allowed on campus for school business, enrollment, parent-teacher conferences, parent nights, etc. Mask wearing is strongly encouraged, as is the physical distancing of 6 feet to the maximum extent possible. Lunch visits are not allowed.